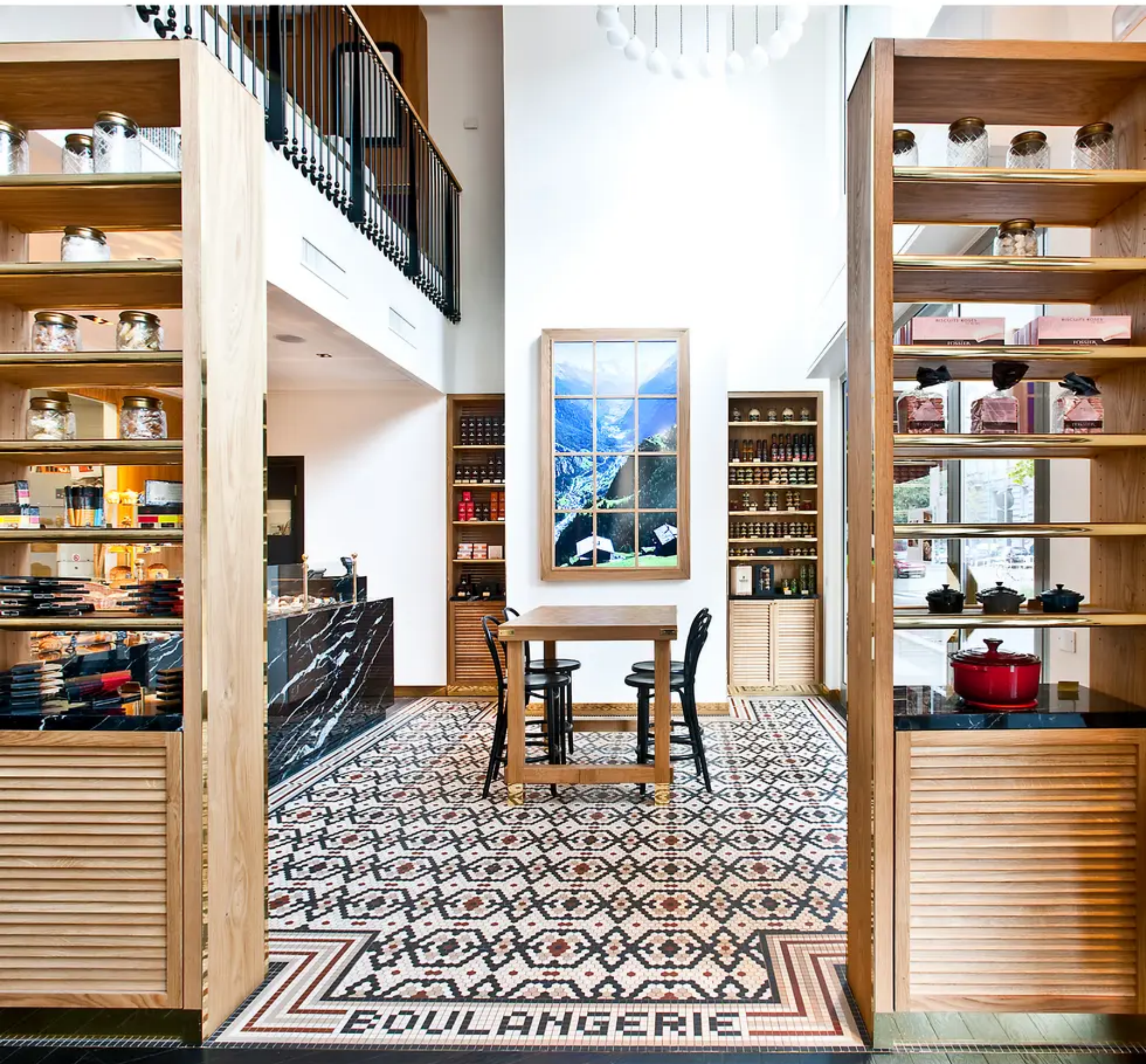


DESIGN GUIDE



A COLLECTION BY  
**HERITAGETILE™**





## *Our Mission*

Heritage Tile was created out of a need for tilework that embodies the same quality and craftsmanship as period architecture. Every Heritage Tile collection has been carefully designed to reproduce the specific time & place that defines your home to restore its original character and period authenticity. Each Heritage Tile collection offers a complete solution for the period home, with appropriate surface finishes, color palettes, trim and mouldings elements, floor mosaics, decorative designs, and ceramic accessories that define its period style.





# CONTENTS

5	INTRODUCTION
6	OUR PROCESS
9	DESIGNER SERIES
10	COLORS
11	SHAPES
12	CUSTOM PATTERNS
14	POPULAR PATTERNS
19	CLASSIC SERIES
20	COLORS
20	SHAPES
21	CUSTOM PATTERNS
22	POPULAR PATTERNS
25	CUSTOM LETTERING
26	POPULAR FONTS
28	GALLERY
31	RESIDENTIAL DESIGNS
39	COMMERCIAL DESIGN
47	INSTALLATION GUIDE



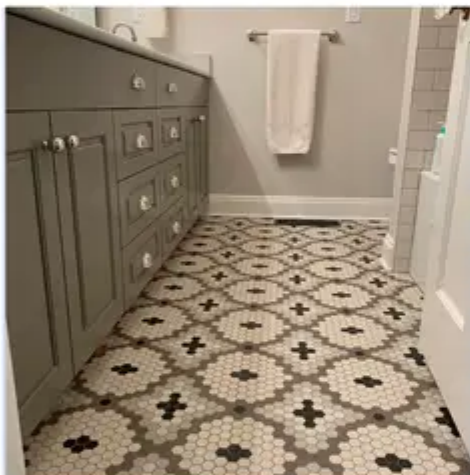




# INTRODUCTION

Subway Mosaics provides tiles that honor our history and revitalize our past. Every detailed element of these vintage tiled spaces, particularly from the 1920's and 30's, can now be reproduced affordably and authentically with materials from the Subway Mosaics collection. With endless tile patterns and design options, achieving a stunning final product is an enjoyable process with help from our expert design team.

## FEATURES



### VERSATILITY

---

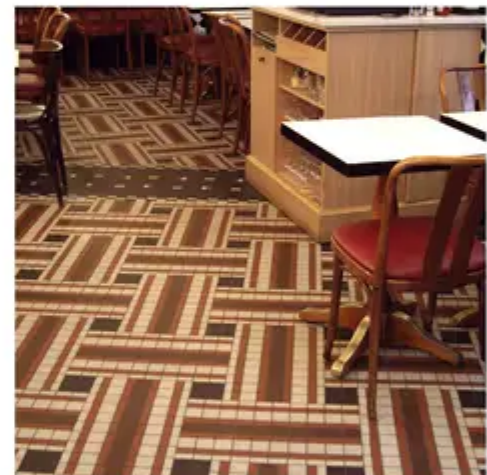
Make your mark on a space with a fully custom design. Be inspired by the rich history of Ancient Greece or the 20th Century New York Subway. Whatever your vision is, we can bring your vision to life.



### DURABILITY

---

Free yourself from the practical constraints you associate with most ceramic tile or stone. Vitreous, unglazed porcelain is suitable for high traffic applications, freeze-thaw environments, and all wet surface conditions.



### COMPATIBILITY

---

Coordinate multiple floor spaces using a common palette for both the Subway Mosaics and Viva Tile collections. Complete the project with Subway Ceramics wall tile designs to restore your period home its original, vintage character.



# OUR PROCESS

This is a tailored service to provide you with a custom mosaic. We can create almost any design, whether it be replicating an original mosaic from a photograph, a historic catalog, or your own creation, the possibilities are limitless. Our team has resources and expertise to help you every step of the way.

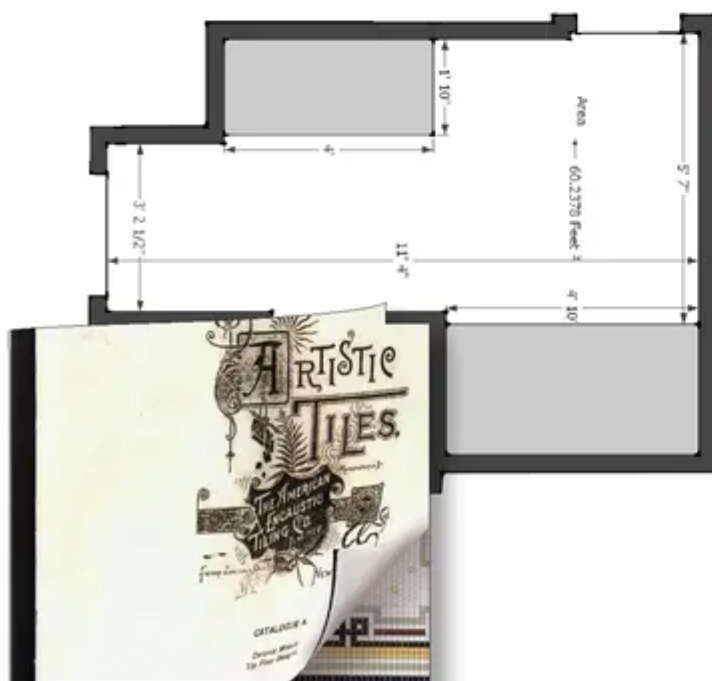


## 1. DEFINE YOUR DESIGN

What inspires you?

What patterns do you love?

What colors inspire you or compliment your space?



## 2. SEND US YOUR INFO

Send us any images or information about your design inspiration. If you have floor plans drawn, we would love to see those too!

Please send all information to [sales@heritagetile.com](mailto:sales@heritagetile.com).





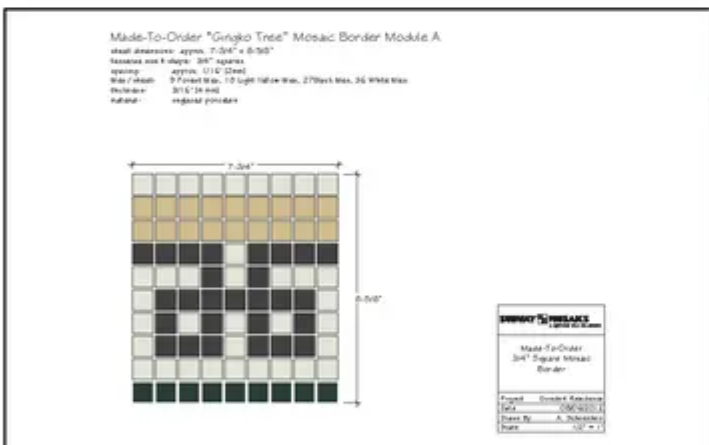
### 3. WORK WITH US

Our designers will interpret your information and provide shop drawings. This may include refining to make sure that our drawings reflect your vision.



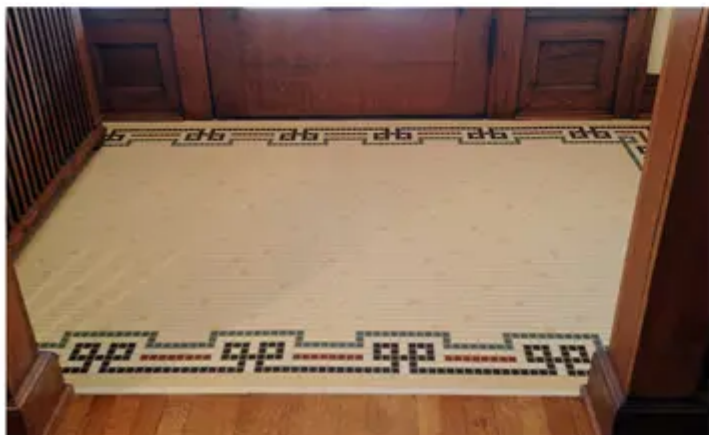
### 4. ORDER YOUR TILE

Work with your tile installer to calculate how much of each module you require for your floor. We always recommend that you order a few extra sheets to cover any unforeseen issues that may arise.



### 5. ANTICIPATE YOUR DELIVERY

Prepare for installation by reviewing the shop drawings provided and asking any questions about assembly or installation.



### 6. INSTALL YOUR TILE

Once your tile arrives, we recommend that your tile installer assembles the design before beginning the install process to ensure all pieces fit like a jigsaw puzzle.







# DESIGNER SERIES

The Designer Series provides a palette of 24 traditional colors available in six different shapes. These mosaic options can transform a space to suit any style from classic Victorian, art deco, to contemporary. The possibilities are limitless.



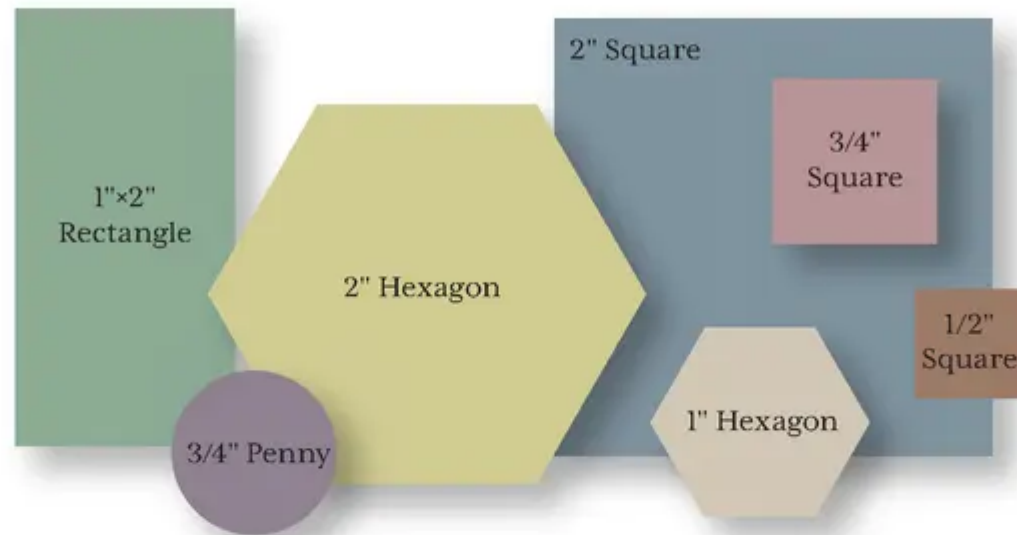
# COLORS

<b>WH</b> White	<b>CM</b> Cream	<b>LR</b> Lt. Gray	<b>LI</b> Linen
<b>RS</b> Rose	<b>OD</b> Orchid	<b>DK</b> Dk. Gray	<b>BK</b> Black
<b>LY</b> Lt. Yellow	<b>LN</b> Lemon	<b>PH</b> Peach	<b>GD</b> Gold
<b>LG</b> Lt. Green	<b>CN</b> Celadon	<b>GN</b> Green	<b>OL</b> Olive
<b>TQ</b> Turquoise	<b>SL</b> Slate	<b>LB</b> Lt. Blue	<b>DM</b> Denim
<b>SN</b> Salmon	<b>CL</b> Caramel	<b>RD</b> Red	<b>CH</b> Chocolate

NOTE: Slight variations in color, shade, and finish are inherent in ceramic products and thickness may vary when combining mosaics of different shapes and dimensions. Please note that the Made-To-Order mosaics are pre-assembled to facilitate installation, however, we call upon the professional expertise of the installer to make the necessary adjustments in the field.



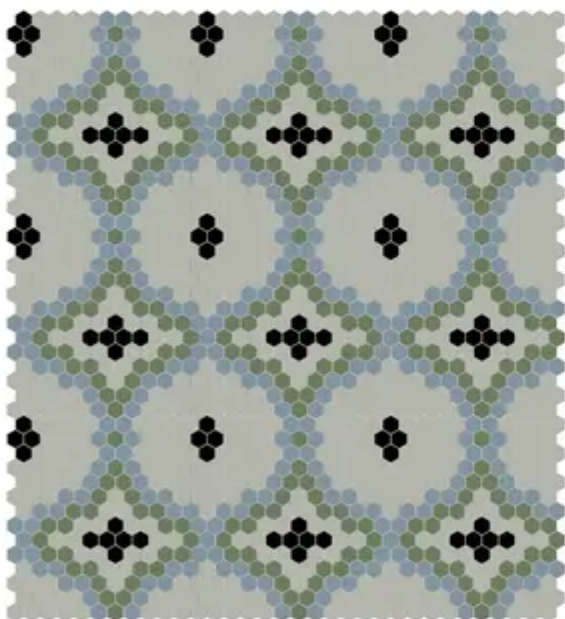
# SHAPES



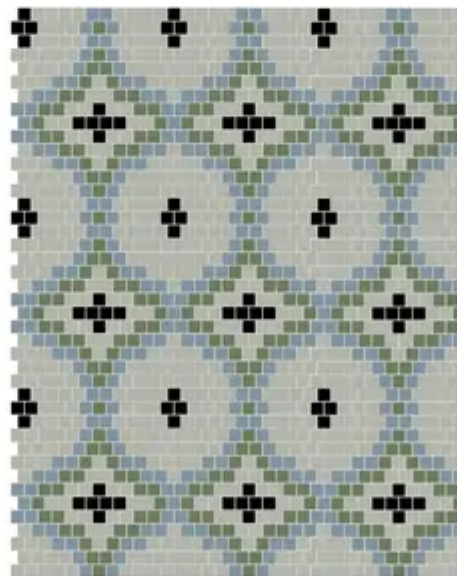
THICKNESS: 1/8"

The choice of the shape dictates the scale of the mosaic. Working within a smaller space? Consider switching to a different tile shape.

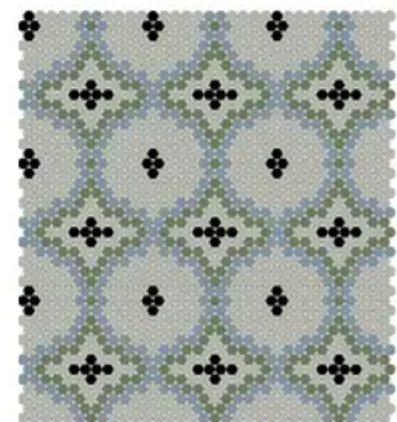
Illustrated here is the same pattern interpreted in 1" hexagons, 3/4" squares, and 3/4" penny rounds.



1" Hexagons



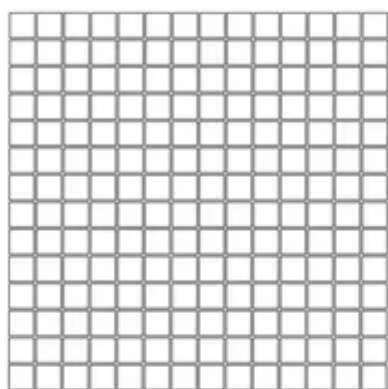
3/4" Squares



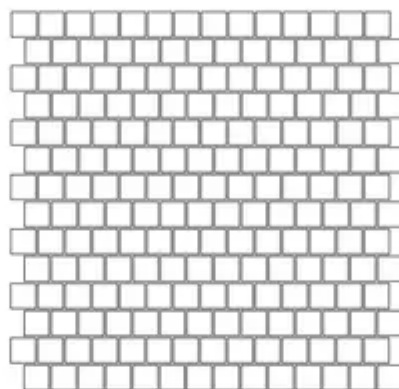
3/4" Penny Rounds



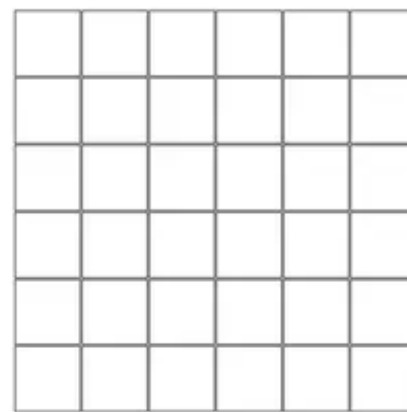
# CUSTOM PATTERNS



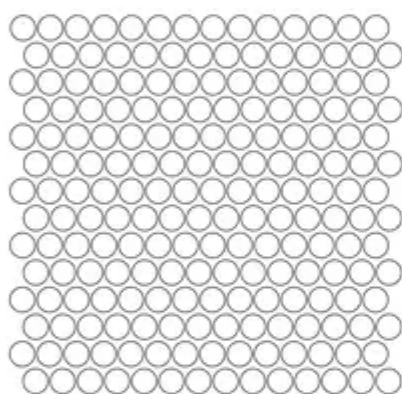
3/4" Square Straight Joint



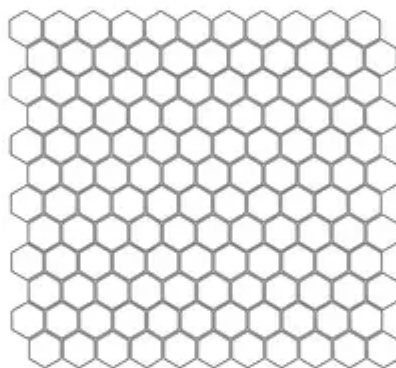
3/4" Square Broken Joint



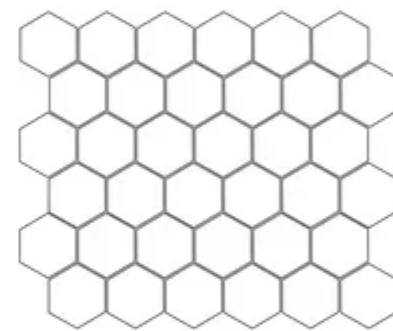
2" Square



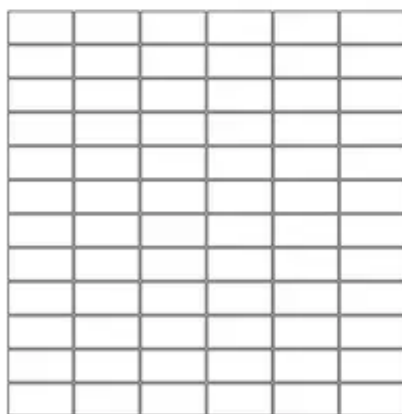
3/4" Penny Round



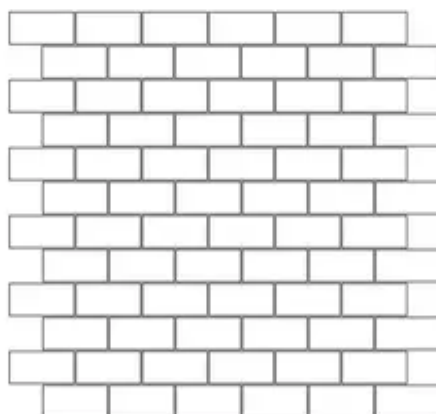
1" Hexagon



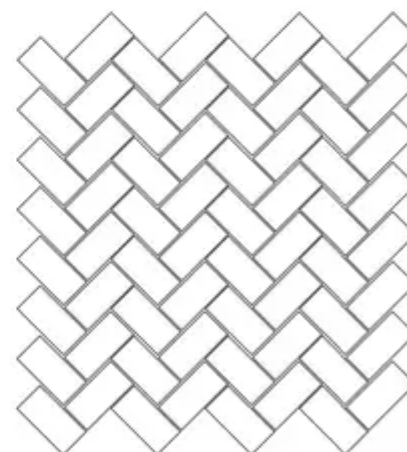
2" Hexagon



1" x 2" Rectangle  
Straight Joint



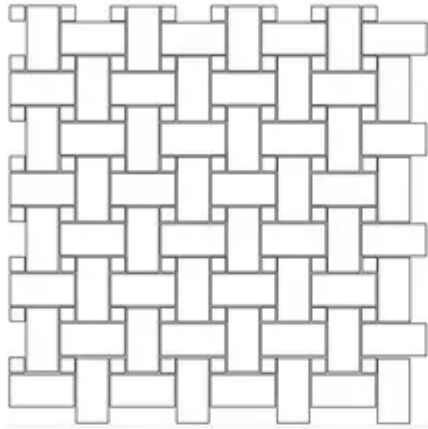
1" x 2" Rectangle  
Broken Joint



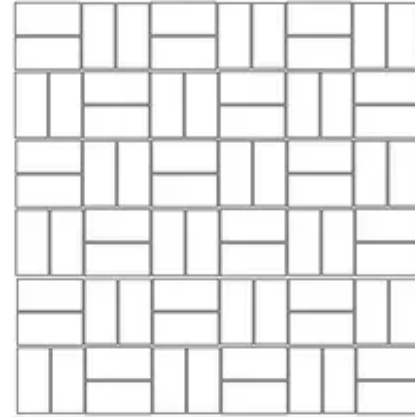
Herringbone



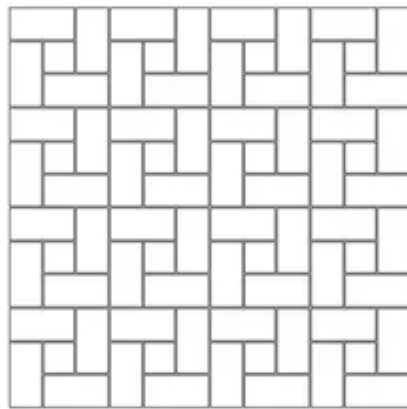
## DESIGNER SERIES



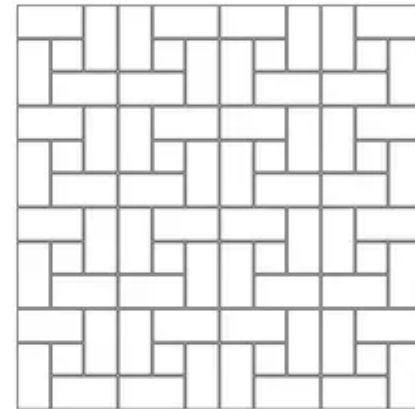
Basketweave



Basket Check



Spiral



Mirror Spiral

All modules are also available in any **solid** color!



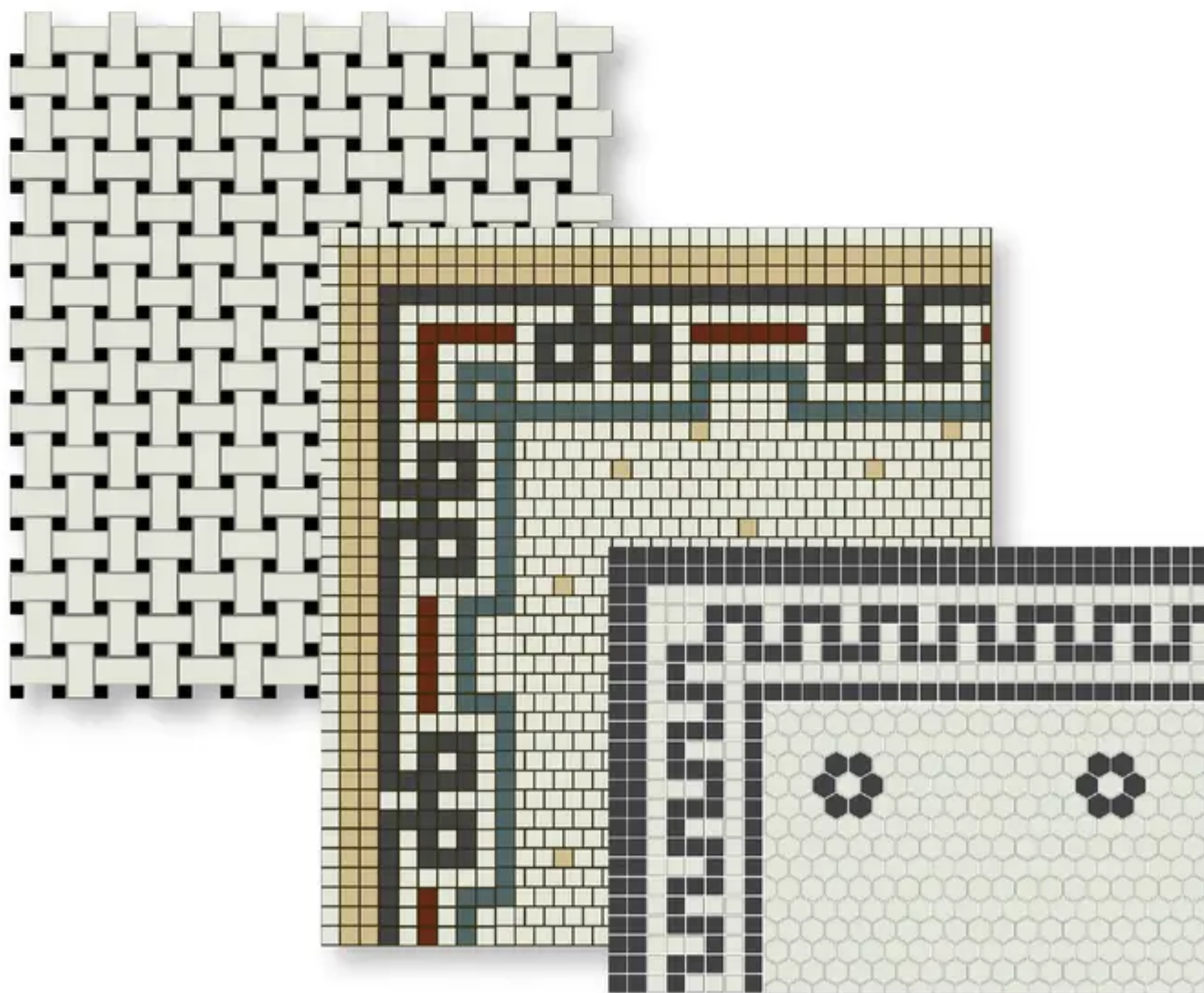


# POPULAR PATTERNS

For a quicker alternative to our Made-to-Order (i.e. custom) mosaics, we offer our standard pattern assortment. These classic mosaic designs, comprised of a pattern border in combination with a pattern field, are found in American architectural period homes throughout history.

Based on your room size, select the quantity of Borders, Outside Corners and Inside Corners to complete the border in your room. Then select the quantity of Field Modules to complete your floor design.

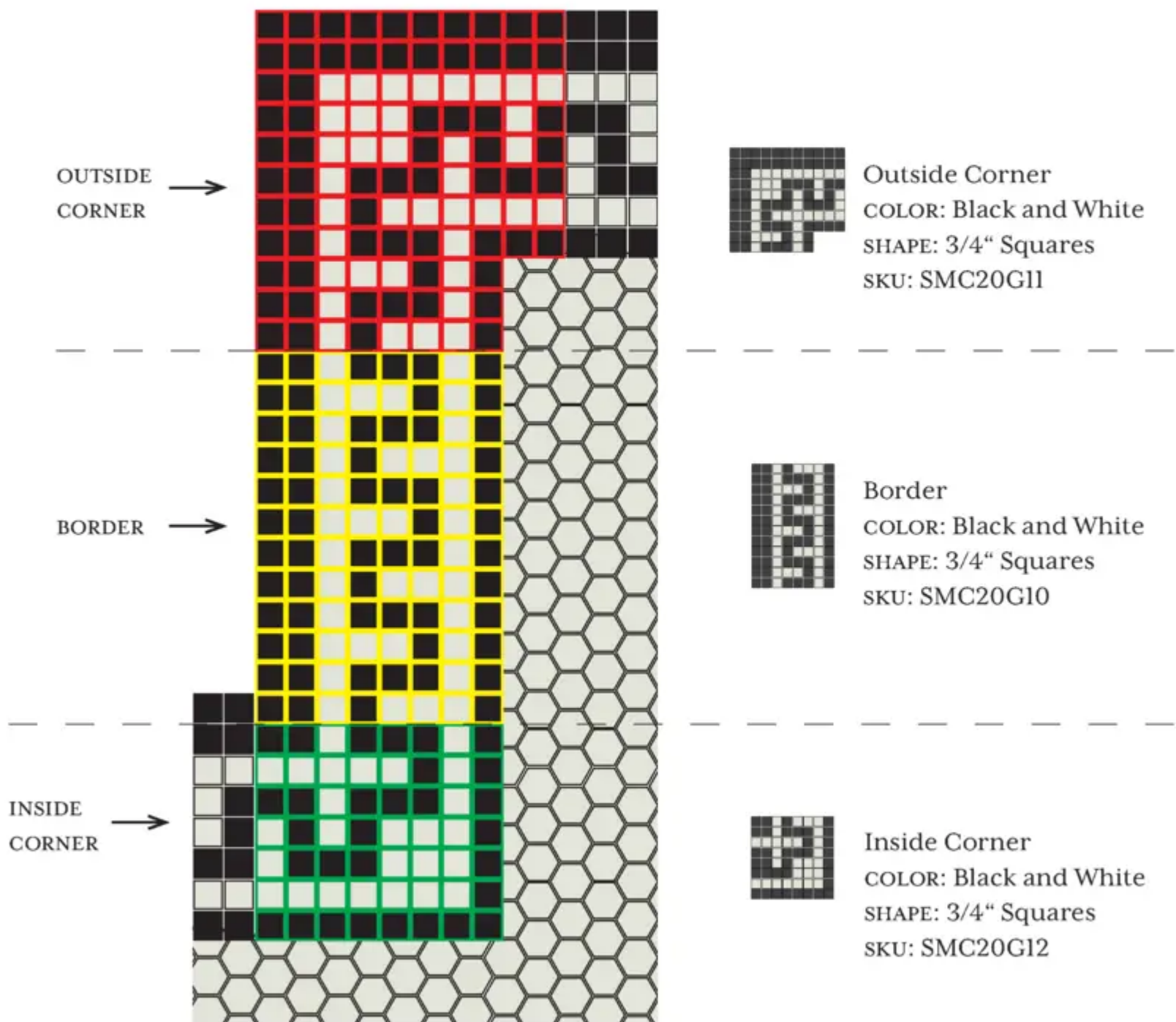
All patterns are available to order on our website and our Design Consultants are ready to assist you with any questions.





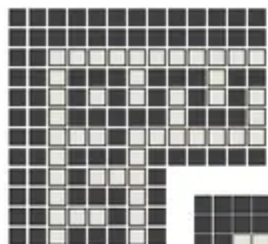
## BORDERS

Our borders are broken down into three components (outside corner, border, and inside corner), as demonstrated here with our Doric Key pattern:





## BORDERS



Looped



Standard

### Doric Key

COLOR: Black and White

SHAPE: 3/4" Squares

BORDER SKU: SMC20G10

OUTSIDE CORNER: SMC20G11

INSIDE CORNER: SMC20G12



### Ionic Key

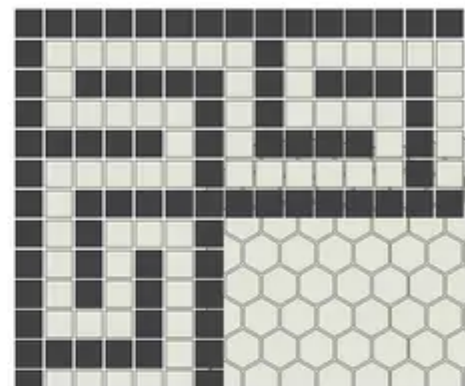
COLOR: Black and White

SHAPE: 3/4" Squares

BORDER SKU: SMC20G20

OUTSIDE CORNER: SMC20G21

INSIDE CORNER: SMC20G22



### Corinthian Key

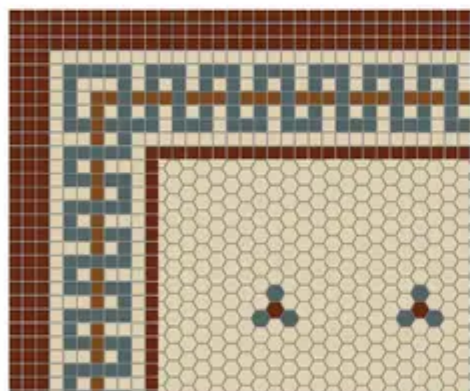
COLOR: Black and White

SHAPE: 3/4" Squares

BORDER SKU: SMC20G30

OUTSIDE CORNER: SMC20G31

INSIDE CORNER: SMC20G32



### Extended Doric Key

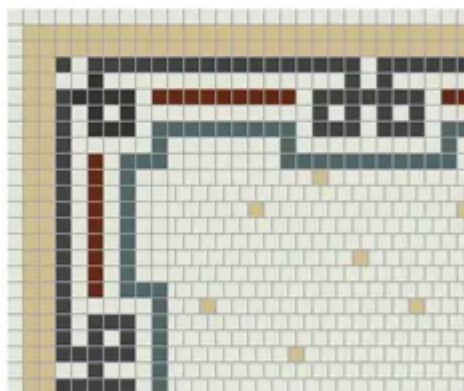
COLOR: Red, Cream, Green, and Caramel

SHAPE: 3/4" Squares

BORDER SKU: SMPPXD00

OUTSIDE CORNER: SMPPXD01

INSIDE CORNER: SMPPXD02



### Ginkgo Tree

COLOR: Black, White, Lt. Yellow, Green, and Red

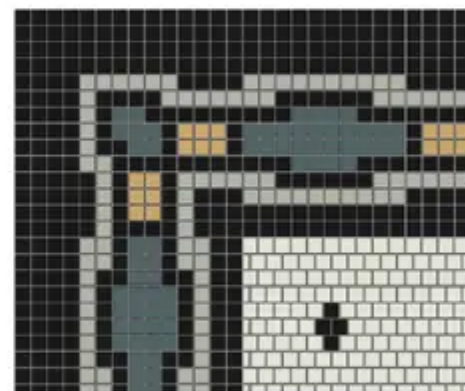
SHAPE: 3/4" Squares

BORDER SKU (1): SMPPGT0A

BORDER SKU (2): SMPPGT0B

OUTSIDE CORNER: SMPPGT01

INSIDE CORNER: SMPPGT02



### Gatsby

COLOR: Black, White, Lt. Gray, Green, Peach

SHAPE: 3/4" Squares

BORDER SKU: SMPPGY0A

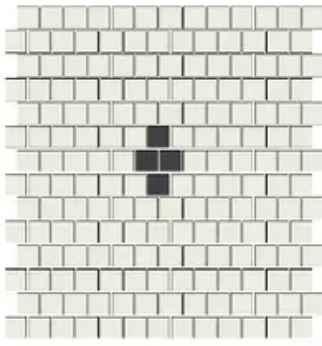
OUTSIDE CORNER: SMPPGY01

INSIDE CORNER: SMPPGY02



## FIELDS

---



### Gatsby Field

COLOR: Black and White

SHAPE: 3/4" Squares

SKU: SMPPGY00

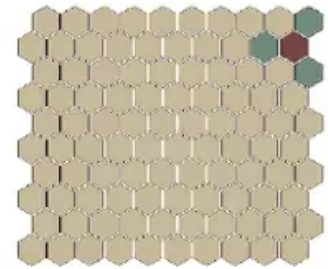


### Ginkgo Tree Field

COLOR: Lt. Yellow and White

SHAPE: 3/4" Squares

SKU: SMPPGT00



### Extended Doric Field

COLOR: Cream, Green, and Red

SHAPE: 1" Hexagon

SKU: SMPPXDF00



### Daisy

COLOR: Black and White

SHAPE: 1" Hexagon

SKU: SMPPDY00

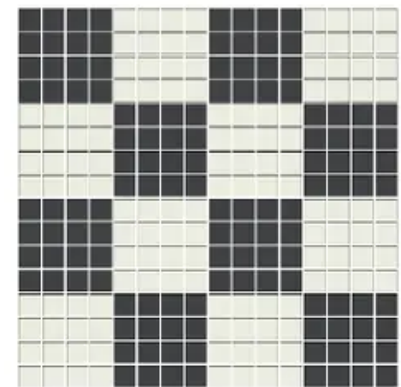


### Basketweave

COLOR: Black and White

SHAPE: 1/2" Squares &  
1" x 2" Rectangles

SKU: SMC50BW1



### Checkerboard

COLOR: Black and White

SHAPE: 3/4" Squares

SKU: SMPPDY00







# CLASSIC SERIES

From simple to complex, the pattern brings the shapes in Arctic and Charcoal together in unlimited combinations. Subway Mosaics affords the opportunity to create a fitting design for your space, whether it is modern, traditional, or something in between.

Mosaic patterns have adorned the floors of buildings throughout American history, from Victorian, to Mid-Century Modern, to contemporary styles. Our team will make your sketches come to life by providing drawings for your approval and building your modules to put together on-site.

## COLORS

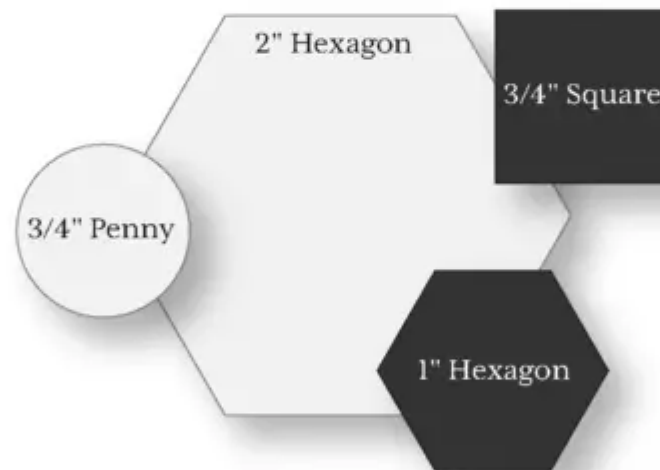


Arctic



Charcoal

## SHAPES



THICKNESS: 5/32"

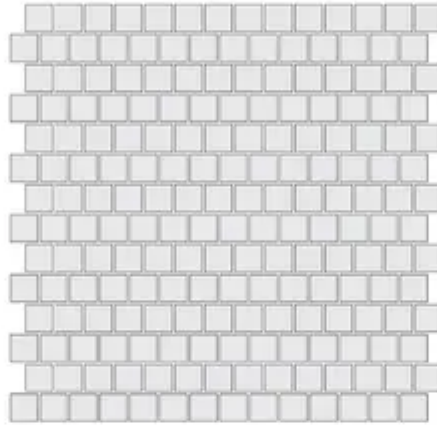
NOTE: Slight variations in color, shade, and finish are inherent in ceramic products and thickness may vary when combining mosaics of different shapes and dimensions. Please note that the Made-To-Order mosaics are pre-assembled to facilitate installation, however, we call upon the professional expertise of the installer to make the necessary adjustments in the field.



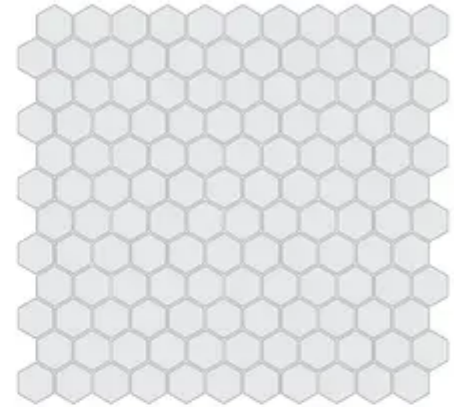
# CUSTOM PATTERNS



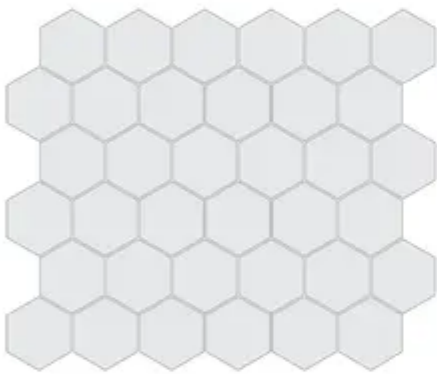
3/4" Square – Straight Joint



3/4" Square – Broken Joint



1" Hexagon



2" Hexagon



3/4" Penny Round

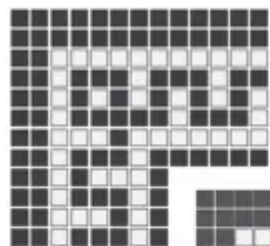
All modules are also available in solid Arctic White or Charcoal!



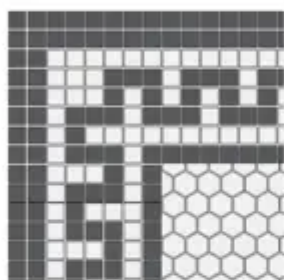
# POPULAR PATTERNS

## BORDERS

---



Looped



Standard

### Doric Key

---

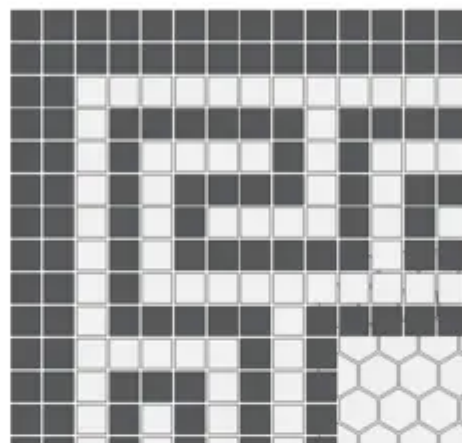
COLOR: Charcoal and Arctic

SHAPE: 3/4" Squares

BORDER SKU: SMC20G10

OUTSIDE CORNER: SMC20G11

INSIDE CORNER: SMC20G12



### Ionic Key

---

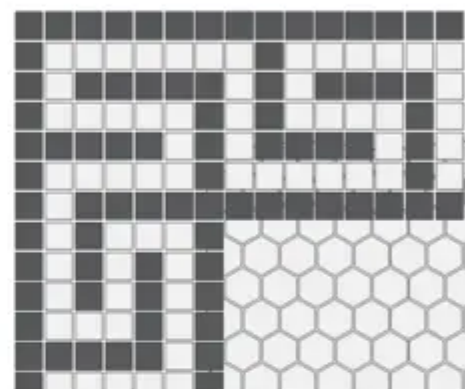
COLOR: Black and White

SHAPE: 3/4" Squares

BORDER SKU: SMC20G20

OUTSIDE CORNER: SMC20G21

INSIDE CORNER: SMC20G22



### Corinthian Key

---

COLOR: Black and White

SHAPE: 3/4" Squares

BORDER SKU: SMC20G30

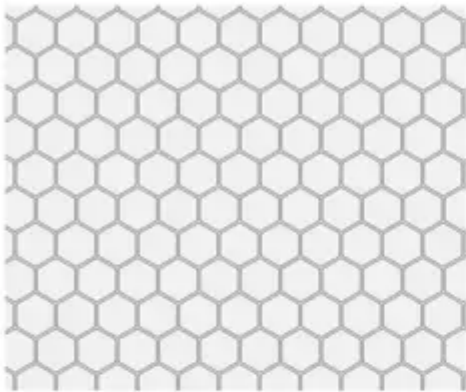
OUTSIDE CORNER: SMC20G31

INSIDE CORNER: SMC20G32



## FIELDS

---

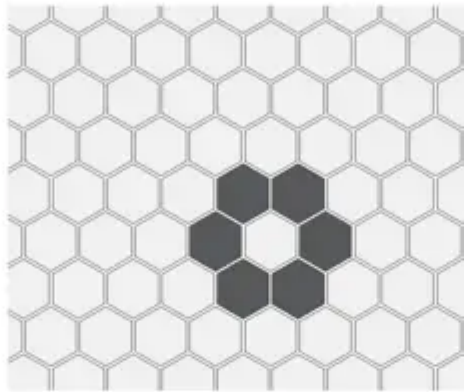


### **Greek**

COLOR: Arctic

SHAPE: 1" Hexagon

SKU: SMM25HE4

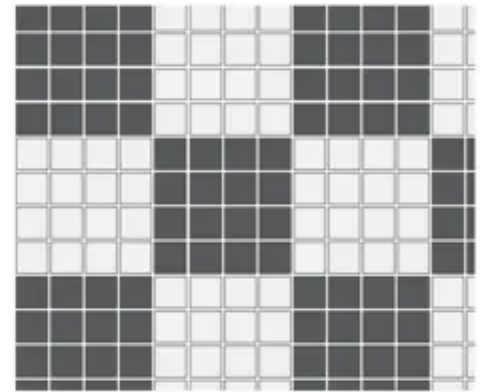


### **Daisy**

COLOR: Arctic and Charcoal

SHAPE: 1" Hexagon

SKU: SMPPDY00



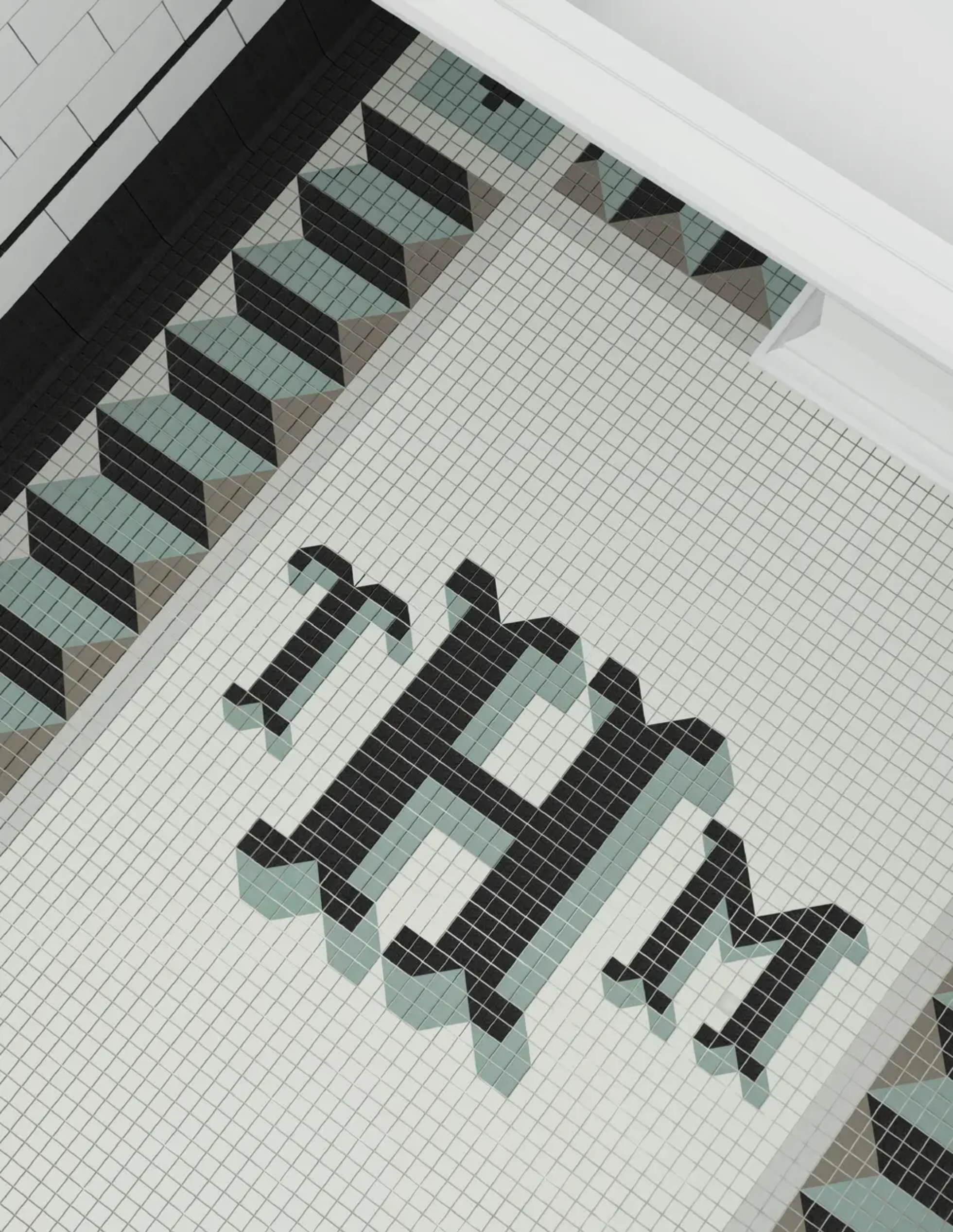
### **Checkerboard**

COLOR: Arctic and Charcoal

SHAPE: 3/4" Squares

SKU: SMC25CB1







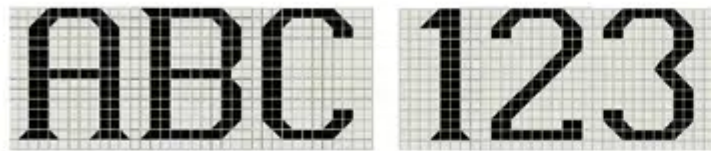
# CUSTOM LETTERING

Are you ready to take your design to the next level? Our wide range of Made-To-Order fonts are perfect for authenticating a period home or adding interest to any space.

# POPULAR FONTS

## SQUARES

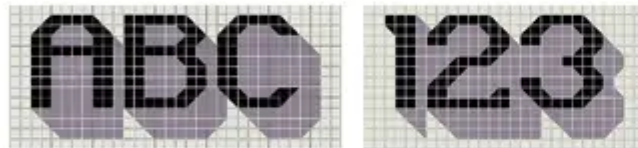
---



A.M.



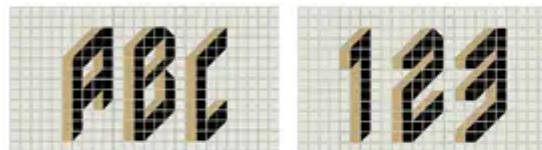
Finch



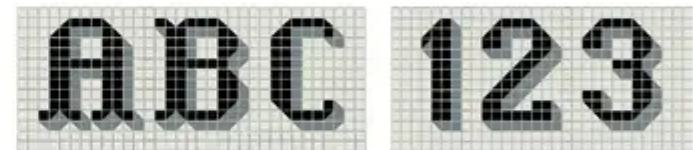
Block Shadow



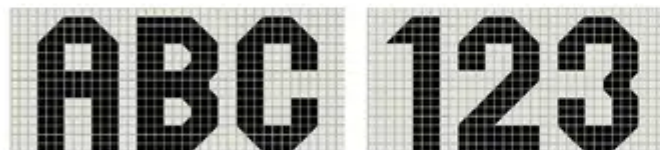
Historic No. 1



California



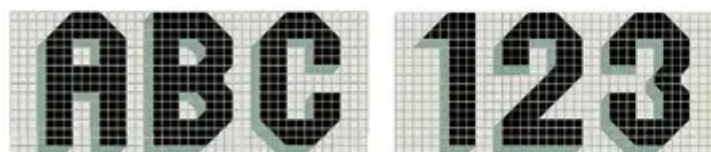
Historic No. 2



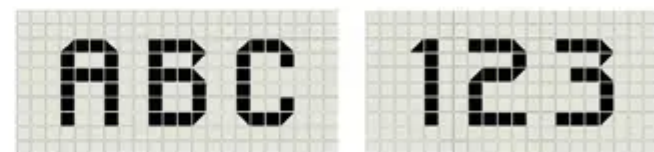
Cap Block



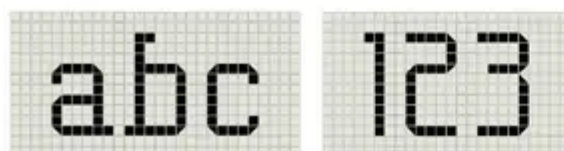
Poco



3D Cap Block



Shallow



Data



Step

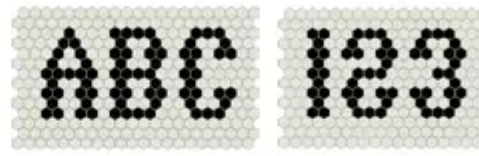


## HEXAGONS

---



Coffee



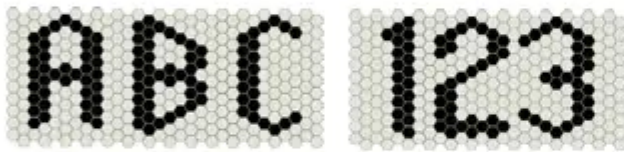
Lauber



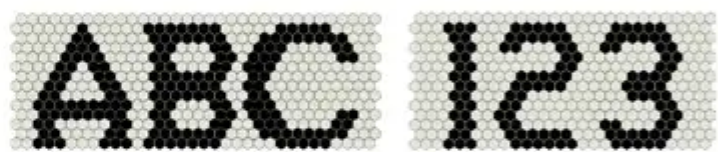
D-Lux



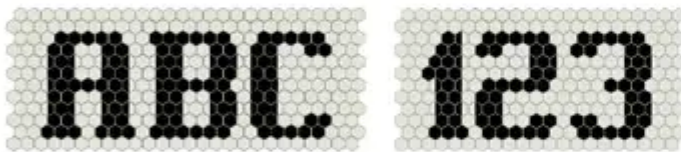
Lean



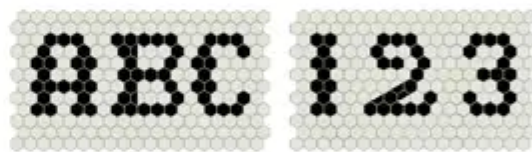
Good



Palmer



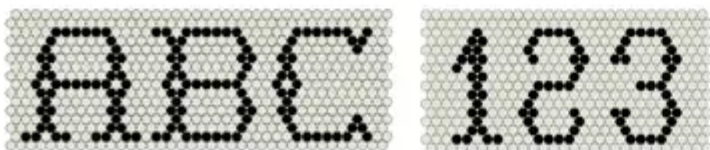
Hex Block



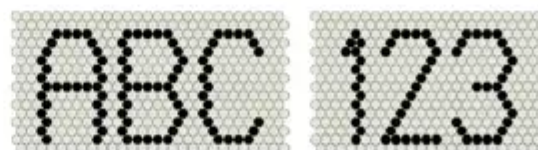
Historic No. 4

## PENNIES

---



Historic No. 3



Penny Drop





# GALLERY

RESIDENTIAL • COMMERCIAL





BORDER: Custom Pattern with 3/4" Squares in Black, Cream, White, Red, and Linen.  
FIELD: Custom Pattern with 1" Hexagons in Black, Cream, White, Red, and Linen.





FIELD: Custom Pattern with 1" Hexagons in Black, White, and Gold.





# RESIDENTIAL DESIGNS



WALL AND TRIM: Subway Ceramics in Gloss White and Gloss Black. FIELD: 2" Hex in Black and White



## RESIDENTIAL



BORDER: Looped Doric Key with 3/4" Squares in Black and White.  
FIELD: 1" Hexagons in White.



FIELD: Custom Pattern with 1" Hexagons in Black, White, and Denim.  
WALL: Subway Ceramics in Gloss White and Gloss Black.



BORDER: Custom Pattern with 3/4" Squares in Arctic and Charcoal.  
FIELD: 3/4" Squares and 1" Hexagons in Arctic.



BORDER: Ginkgo Tree with 3/4" Squares in White, Cream, Celadon, Red, and Denim.  
FIELD: Ginkgo in White and Cream.





FIELD: Custom Pattern with 1" Hexagons in White, Light Gray, Dark Gray, and Black.



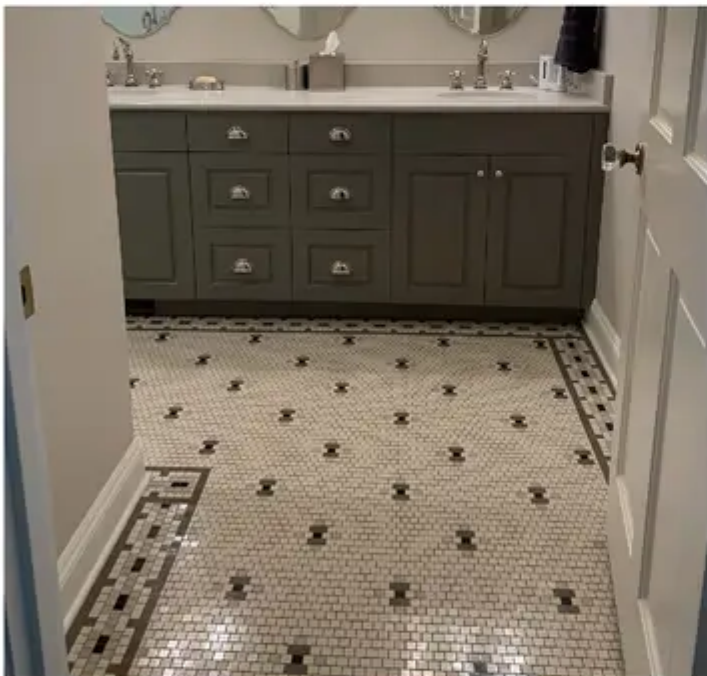
## RESIDENTIAL



FIELD: Custom Pattern with 1" Hexagons in White and Black.  
WALL: Subway Ceramics in Gloss White and Gloss Black.



FIELD: Custom Pattern with 1" Hexagons in White, Black, Light Gray, and Light Blue.



BORDER AND FIELD: Custom Pattern with 3/4" Squares in Dark Gray, White, Light Gray, and Black.



BORDER: Custom Pattern with 1" Hexagons in Black and White.  
FIELD: Daisy with 1" Hexagons in Black and White.





FIELD: Custom Pattern with 1" Hexagons in Black, Turquoise, White, Light Yellow and Denim.



## RESIDENTIAL



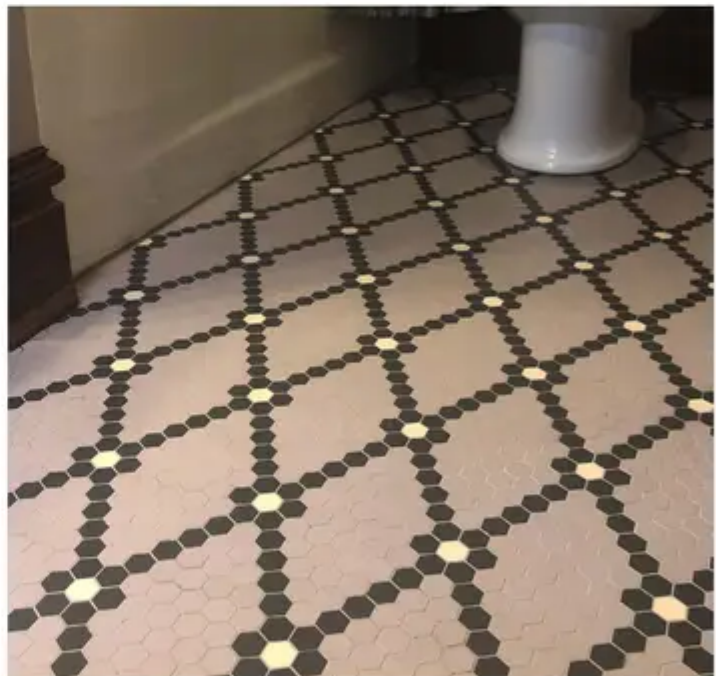
FLOOR FIELD: 1x2" Rectangles in Light Green, 3/4" Squares in Light Yellow.



BORDER: Extended Doric Key with 3/4" Squares in Red, White, Green, and Caramel.  
FIELD: Extended Doric Key with 1" Hexagons in White, Green and Red.



FIELD: Custom Pattern with 3/4" Squares in White, Red, and Green.



FIELD: Custom Pattern with 1" Hexagons in Orchid, Black, and White.





FIELD: Custom Pattern with 3/4" Squares in Light Gray, White, and Black.





# COMMERCIAL DESIGN





BORDER: Custom Pattern with 3/4" Squares in Black, Cream, White, Red, and Linen.  
 FIELD: Custom Pattern with 1" Hexagons in Black, Cream, White, Red, and Linen.



## COMMERCIAL



**BORDER:** Custom Pattern with 3/4" Squares in Green and White.  
**FIELD:** Custom Pattern with 1" Hexagons in White, Light Gray, Green, Red, and Denim.



**FIELD:** Custom Pattern with 1" Hexagons in White, Light Gray, Dark Gray, and Black.



**BORDER:** Ionic Key with 3/4" Squares in Black and White.  
**FIELD:** Custom Pattern with 3/4" Squares in White and Black.



**FIELD:** Custom Pattern with 1" Hexagons in White, Dark Gray, Green, Red, and Lemon.





BORDER AND FIELD: Custom Pattern and Lettering with 3/4" Squares in Black and White.



## COMMERCIAL



FIELD: Custom Lettering with 1" Hexagons in Black and White.



FIELD: Custom Lettering with 3/4" Squares in White and Black.

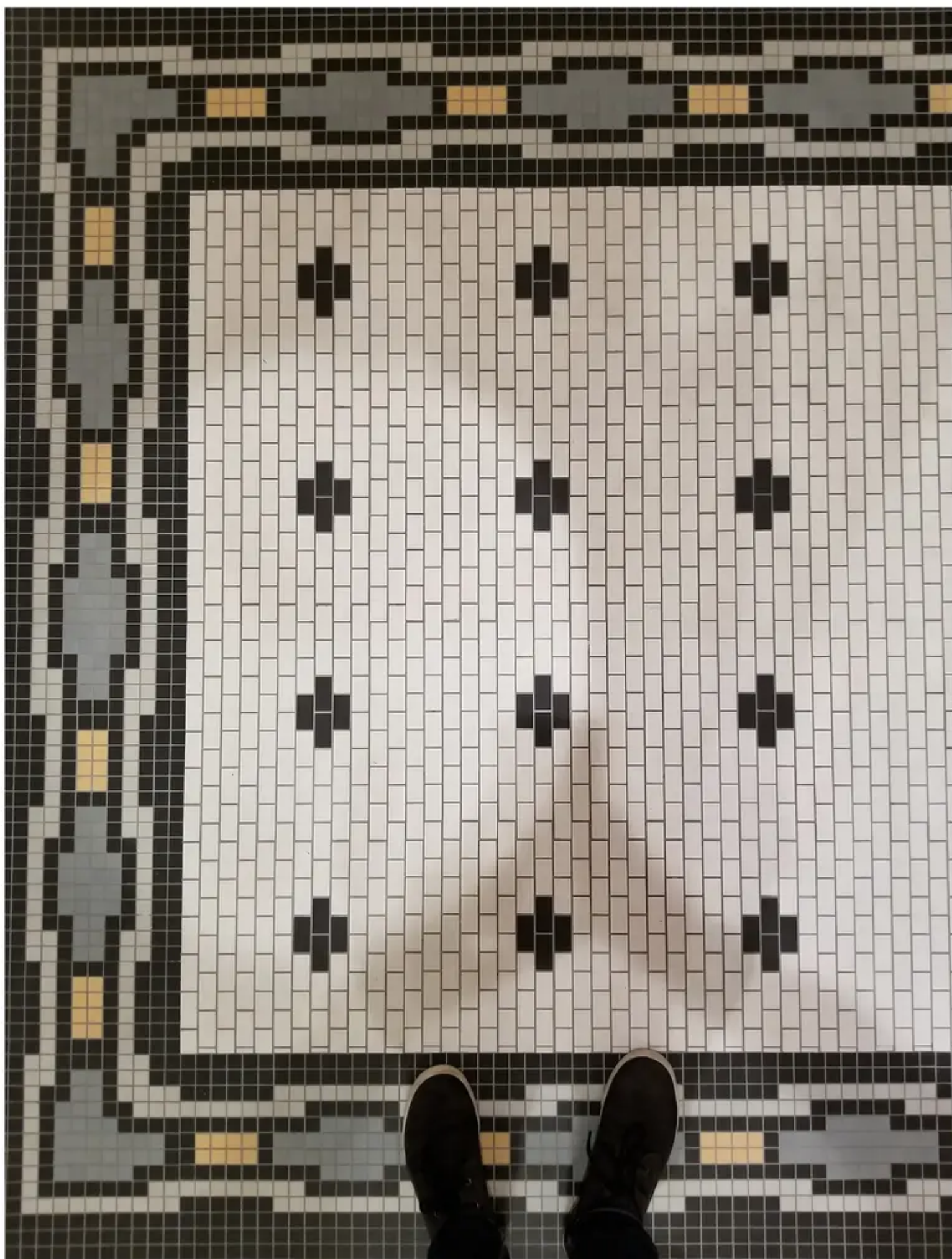


FIELD: Custom Lettering with 1" Hexagons in White and Black.



FIELD: Custom Lettering and Pattern with 3/4" Squares in Green, White, and Black.  
1" Hexagons in White.





BORDER: Modified Gatsby with 3/4" Squares in Black, White, Turquoise, and Light Yellow.  
FIELD: Gatsby with 1x2" Rectangles in White and Black.



## COMMERCIAL



FIELD: Custom Lettering with 3/4" Squares in Green, White, and Black. 1" Hexagons in White.



FIELD: Custom Pattern with 3/4" Squares in Black and White.



BORDER: Custom Pattern with 3/4" Pennies in White, Denim, Light Blue, Caramel and Black. 3/4" Squares in Dark Grey.  
FIELD: 3/4" Pennies in Gold, White, Denim, Black, and Light Blue.



FIELD: 1" Hexagons in White, Black, and Red.





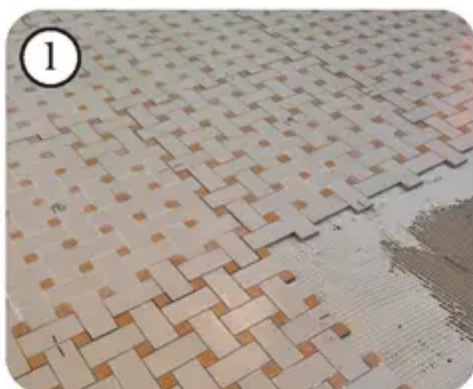


# INSTALLATION GUIDE

We sincerely care about our craft, and are eager to share our experience and design resources with you. Please read these instructions carefully before you begin installation. This information will help insure life-long enjoyment of your unglazed porcelain mosaic tile.



## INSTALLATION GUIDE



### Substrate Preparation

Prepare all surfaces to be completely flat & level to avoid irregularities. For any wet or humid areas the use of CBUs are recommended. For any other conditions, substrates made of gypsum board are appropriate.



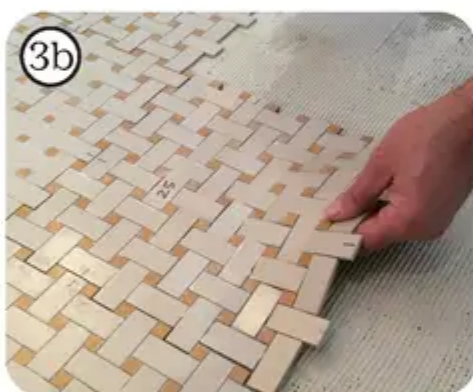
### Tile Layout

Dry laying the tile is recommended. Adjust the pattern and cut the tiles to fit the space. Number the sheets and stack them for quick and correct installation.



### Tile Installation

Apply mortar using a 1/8" - 3/16" V-notch or U-notch trowel for tiles 2" or smaller. Work 2-4 square foot section at a time to prevent mortar skim over.



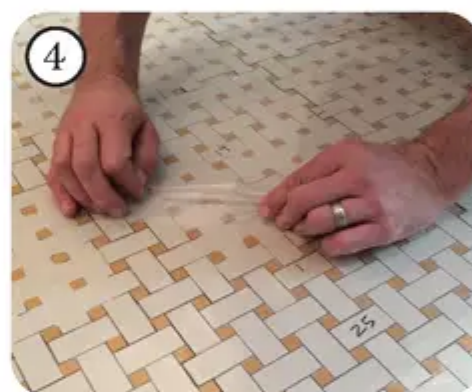
### Tile Installation

Lay one sheet at a time. Check alignment and consistency of spacing between sheets.



### Tile Installation

Use a grout float, speed square or block of wood to push tiles flat into mortar while setting. Repeat Step 3 until all sheets are laid. Let dry.



### Remove Face Tape

Wait a minimum of 12 hours before removing face tape. Pull plastic off at the horizontal (against tile). A heat gun can be used 6-8 inches from floor to loosen bond.



### Grout

Use water to remove any hazing or residue. Seal all porcelain tile and allow to dry a minimum of 12 hours.



### Seal

Use sanded grout, keep grout float flat with tile surface, do not overwipe and create shallow joints. Wait 72 hours for curing. Reseal all tile/grout as needed.

For more information: refer to the TCNA Manual (Tile Council of North America), current edition for tile installation standards and methods.



# INSTALLATION AND CARE INSTRUCTIONS

Please read these instructions carefully before you begin installation. This information will help insure life-long enjoyment of your unglazed porcelain mosaic tile.

## **DAMAGE/FREIGHT CLAIMS:**

Please inspect all material for damage. If you find extensive damage, contact Heritage Tile immediately so we can help you file a claim with your freight carrier.

## **SETTING MATERIALS & METHODS:**

We recommend you use a high quality polymer modified (latex) thin set mortar. For additional information, please consult the Tile Council of America's Handbook for Ceramic Tile.

## **INSTALLATION:**

For more information call the TCA at (864) 646-8453 or email at [literature@tileusa.com](mailto:literature@tileusa.com)

## **MARKING TILES:**

Care should be taken during the measuring and marking process to protect against hard-to-remove marks and stains. We recommend masking tiles or using a pre-grout coating to guard against unwanted marks.

## **SEALING YOUR TILE:**

We highly recommend that a high quality penetrating sealer be used before and after grouting. Pre-grout sealing (applied as a grout release) is most critical with unglazed porcelain to help in the removal of grout residue from the textured tile surface. Seal grout lines once the grout has cured fully by following the grout and sealer manufacturer's instructions.

## **CARE & MAINTENANCE:**

Please consult your tile installer regarding care and maintenance of your tile installation. For routine cleaning we recommend a neutral pH cleaner that removes dirt and soil buildup from tile such as mild non-acidic and non-abrasive soap. For heavy-duty cleaning we recommend an alkaline-based cleaner appropriate for degreasing and removing wax.

For additional information, contact one of these companies considered industry leaders in products for the protection and maintenance of tile and stone:

»Miracle Sealants ([www.miraclesealants.com](http://www.miraclesealants.com)) or call (800) 350-1901 ext. 3013

»Aqua Mix ([www.aquamix.com](http://www.aquamix.com)) or call (800) 366-6877







THANK  
YOU









